

# GPX Series

## Full Service - Electric Fire Pump Controllers

### Standard Features

- ViZiTouch 2.1 operator interface
- Pressure and event recorder
- Voltage and amperage display
- Single operator for both isolating switch and circuit breaker
- Surge arrestor
- Lifting lugs
- Run test push button
- Available with automatic power transfer switch
- Emergency start handle
- Start and stop pushbuttons
- Locked rotor protector
- Phase reversal indication
- Remote start / deluge valve start provision
- Pressure transducer and run test solenoid valve externally mounted
- Gland plate
- Alarm buzzer
- Alarm contacts for remote indication
- Available with full voltage and reduced voltage starting



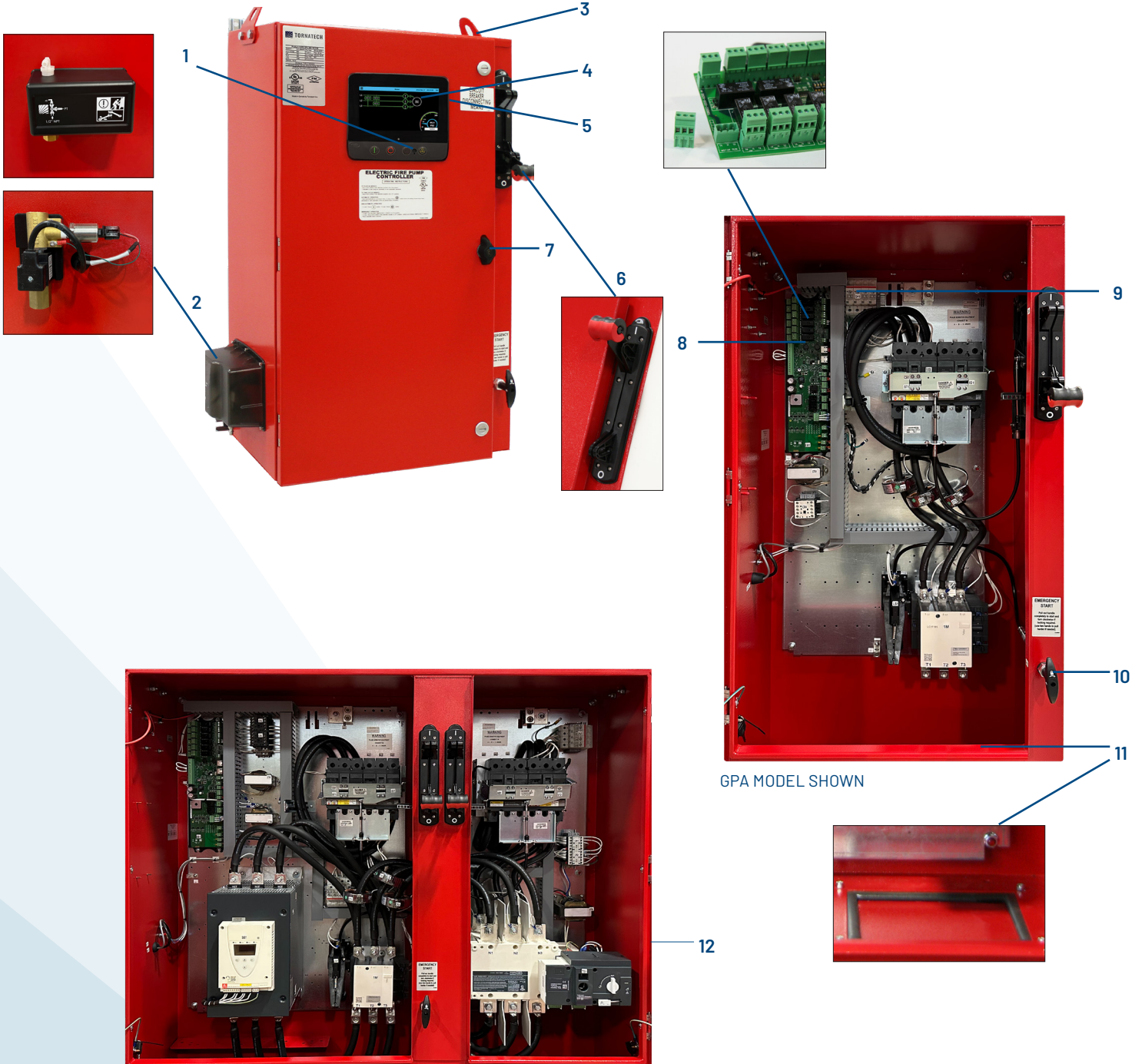
### Starting Methods

- Model GPA - Across-the-line
- Model GPY - Wye-Delta Open
- Model GPP - Partwinding
- Model GPR - Autotransformer
- Model GPW - Wye-Delta Closed
- Model GPS - Soft Start Soft Stop

	Tornatech Inc Laval, Canada	Tornatech Europe SA Mont-Saint-Guibert, Belgium	Tornatech FZE Dubai, UAE
<b>Standard Enclosure Rating</b>	NEMA 2	IP55	NEMA 2
<b>CE</b>	Optional	Standard	Optional
<b>SEISMIC COMPLIANT</b>	Optional	Optional	Optional



1. Alarm buzzer
2. Externally mounted pressure transducer and run test solenoid valve with protective cover
3. Lifting Lugs
4. ViZiTouch 2.1 operator interface
5. Side USB device connector
6. Custom designed Isolation switch / Circuit breaker operator handle
7. Key lock
8. Remote alarm contacts with removable terminals
9. Surge arrestor
10. Custom designed emergency start mechanism with integrated limit switch
11. Gland plate
12. Automatic power transfer switch



GPA MODEL SHOWN

GPS + GPU MODEL SHOWN

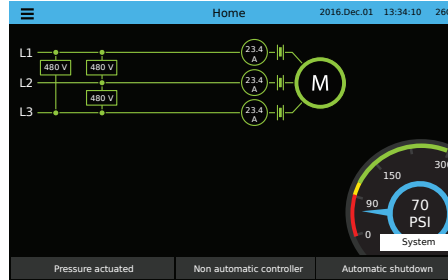


# ViZiTouch 2.1 Operator Interface

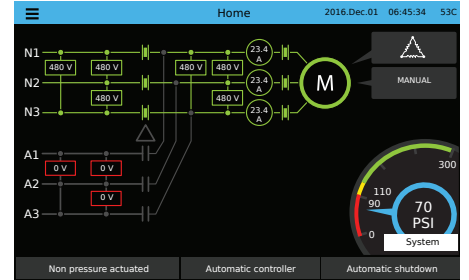


## HOME SCREEN

Electric Fire Pump Controller



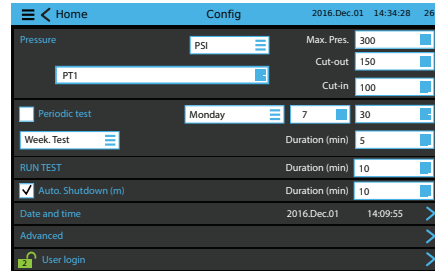
Electric Fire Pump Controller with Automatic Transfer Switch



## ON-SCREEN MENU

- Home
- Alarm
- Configuration
- History
- Service
- Manual
- Languages

## SETTINGS



## EVENTS

History	Events	2016.Dec.01 14:34:28 26C
2016.12.01	14:28:52	Under Voltage: ACTIVE
2016.12.01	14:28:23	Under Voltage: INACTIVE
2016.12.01	14:28:09	Alarms Reset
2016.12.01	14:28:08	ACB in OFF or Tripped: INACTIVE
2016.12.01	14:12:06	Alternate is Tripped/Open: INACTIVE
2016.12.01	14:11:22	Pump On Demand: INACTIVE
2016.12.01	14:09:55	Control Voltage not Healthy: ACTIVE
2016.12.01	14:08:46	Generator: Started
2016.12.01	14:03:11	Motor: Started in Automatic
2016.12.01	14:03:03	Loss of Power: ACTIVE

## HISTORY/STATISTICS

Statistics	Statistics	2016.Dec.01 14:34:28 26C
First Service Statistics		
From		
Since	2016.12.01	14:28:09
On Time		61-04-08:27
Motor		
On Time		0-00-08:57
Start Count		20
Last Started On	2016.12.01	14:08:46
Pressure		
Minimum		99.1 PSI

## SERVICE

**TORNATECH**

The Americas  
+1 514 334-0523  
+1 800 363-8448 (Toll Free)

Europe  
+32 (0) 10 84 40 01

Middle East  
+971 (0) 4 887 0615

Asia  
+65 6796 8314

Commissioning date: 2016.12.01 14:28:52

Last service date: 2016.12.01 14:28:52

Service interval: 1 year

Next service due: 2016.12.01 14:28:52

Complete service >

Live view >

Nameplate Information >

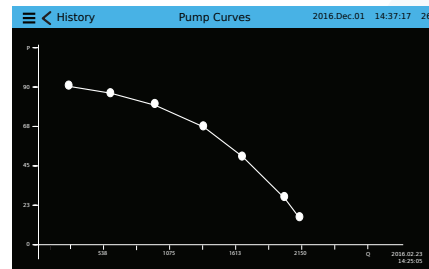
Jockey pump cut-out: 110

Jockey pump cut-in: 130

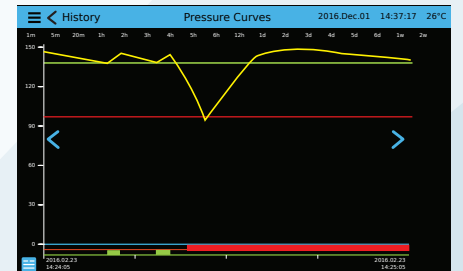
## VIZITOUCH 2.1 MAJOR FEATURES INCLUDE:

- Touch screen operation with 7" color display and intuitive graphics
- Multi-language
- Upgradable software
- Password protected

## PUMP CURVES



## PRESSURE CURVES



**GPX SERIES / VOLTAGE / HP / SHORT CIRCUIT WITHSTAND RATING / SEISMIC CERTIFICATION**

Model	Voltage	HP	Short Circuit Withstand Rating
GPA GPA+GPU	200V - 208V	5-150	100kA
		200	50kA
	220V - 240V	5-200	100kA
		250	50kA
GPP GPP+GPU	380V - 416V	5-300	100kA
		350-450	50kA
GPY GPY+GPU	440V - 480V	5-400	100kA
		450	
	575V - 600V	500	50kA
		5-500	
GPR GPR+GPU	200V - 208V	5-150	100kA
		200	50kA
	220V - 240V	5-200	100kA
		250	50kA
GPW GPW+GPU	380V - 416V	5-300	100kA
		350-450	50kA
GPW GPW+GPU	440V - 480V	5-400	100kA
		450	
	575V - 600V	500	50kA
		5-500	

Model	Voltage	HP	Short Circuit Withstand Rating
GPS GPS+GPU	200V - 208V	5-100	100kA
		150	
		200	50kA
	220V - 240V	5-150	100kA
		200	
		250	50kA
	380V - 416V	5-250	100kA
		300	
		350-450	50kA
	440V - 480V	5-300	100kA
		350	
		400	
		450	
		500	50kA
575V - 600V	5-400		
	450	50kA	
	500		

**HOW TO ORDER:** GPx - V / HP / Ph / Hz / Options

Ex.: GPA - 208 / 30 / 3 / 60 / Options

**AMERICAS**

Tornatech Inc.  
Head Office  
Laval, Quebec, Canada  
Tel: + 1 514 334 0523  
Toll free: + 1 800 363 8448

**EUROPE**

Tornatech Europe SA  
Mont-Saint-Guibert, Belgium  
Tel: + 32 (0) 10 84 40 01

**MIDDLE EAST**

Tornatech FZE  
Dubai, United Arab Emirates  
Tel: + 971 (0) 4 821 7555

**ASIA**

Tornatech Pte Ltd.  
Singapore  
Tel: + 65 6795 8114  
Tel: + 65 6795 7823